

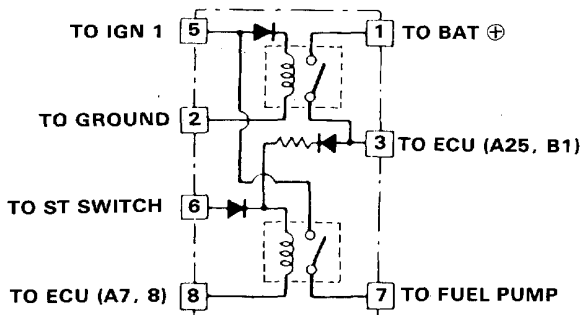
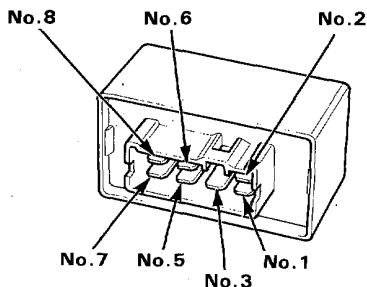
Fuel Supply System

Main Relay

Relay Testing

NOTE: If the car starts and continues to run, the main relay is OK.

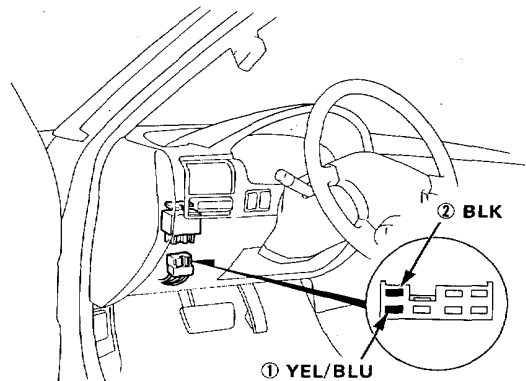
1. Remove the main relay.
 2. Attach the battery positive terminal to the No.6 terminal and the battery negative terminal to the No.8 terminal of the main relay. Then check for continuity between the No. 5 terminal and No.7 terminal of the main relay.
- If there is continuity, go on to step 3.
 - If there is no continuity, replace the relay and retest.



3. Attach the battery positive terminal to the No.5 terminal and the battery negative terminal to the No.2 terminal of the main relay. Then check that there is continuity between the No.1 terminal and No.3 terminal of the main relay.
- If there is continuity, go on to step 4.
 - If there is no continuity, replace and retest.
4. Attach the battery positive terminal to the No.3 terminal and battery negative terminal to the No.8 terminal of the main relay. Then check that there is continuity between the No.5 terminal and No.7 terminal of the main relay.
- If there is continuity, the relay is Ok;
 - If the fuel pump still does not work, go to harness Testing in the next column.
 - If there is no continuity, replace the relay and retest.

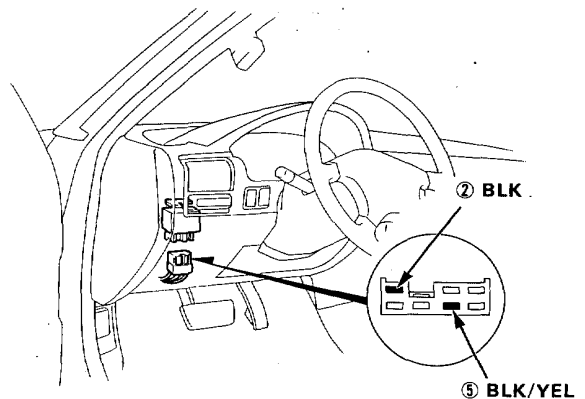
Harness Testing

1. Keep the ignition switch in the OFF position.
 2. Disconnect the main relay connector.
 3. Check for continuity between the BLK wire ① in the connector and body ground.
- If there is continuity, go to step 4.
 - If there is no continuity, repair open in BLK wire.
4. Attach the positive probe of voltmeter to the YEL/BLU wire ① and the negative probe to the BLK wire ②.



Battery voltage should be available.

- If there is no voltage, check the ECU fuse (main fuse box) and the wiring between the main relay and the ECU fuse (10 A).
5. Attach the positive probe of voltmeter to the BLK/YEL wire ⑤ and the negative probe to the BLK wire ②.



6. Turn the ignition switch ON.

Battery voltage should be available.

- If there is no voltage, check No.2 fuse and the wiring from the ignition switch to the fuse box and the wiring from the fuse box to the main relay.